



In-Home Family Education is a term coined by those involved in early childhood home visiting in West Virginia. The term In-Home Family Education is used interchangeably with the terms home visiting or home visitation.

Partners in Community Outreach is a coalition of three In-Home Family Education programs in West Virginia: Healthy Families America, abbreviated HFA, Maternal Infant Health Outreach Workers, abbreviated MIHOW & Parents As Teachers, abbreviated PAT. MIHOW comes to us from Vanderbilt University and is the oldest WV In-Home Family Education program, as it started in Fayette County in the 1980s at New River Health, where it remains today. HFA (which comes to us from Hawaii) & PAT (which comes to us from Missouri) both started in the 1990s. HFA was started in Cabell County at TEAM for WV Children, where it remains. PAT was started in Kanawha County, and we currently have two PAT programs in Kanawha County.



All three programs are unique in their own way, but due to the many similarities, the three programs decided to form a coalition in 1999, Partners in Community Outreach (abbreviated PiCO). The activities of PiCO is funded by the Claude Worthington Benedum Foundation.

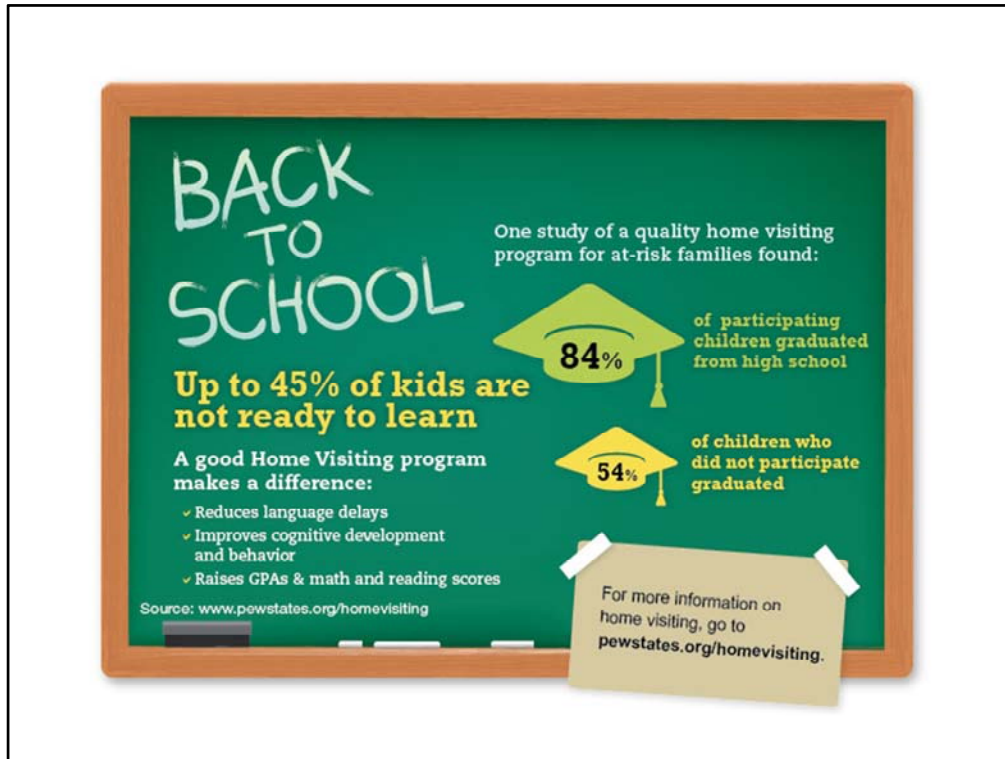
The similarities between the three programs are that they all:

1. work with families prenatally until the child is at least 3 years old;
2. meet the families in the home;
3. are available at no cost to the family;
4. do not require income eligibility;
5. are voluntary – no family is court-ordered to participate in In-Home Family Education;
6. are strengths-based while helping families meet their needs;



7. work with the family on:

- the safety of the child, including child neglect and abuse prevention;
- the health of the pregnant mother and child, including ensuring that the pregnant mother and child have a medical home where they obtain prenatal and/or wellness visits with a health care provider;
- understanding healthy child development, including identifying developmental delays;



- early learning and literacy;
- information and referral to resources that can help the family nurture their child.



In 2012, the Sisters of Saint Joseph Health and Wellness Foundation chose In-Home Family Education as one of their projects with the most promise to impact the long-term health of West Virginia's children. Five In-Home Family Education sites were awarded small grants to assist in strengthening cross-model standards and quality indicators, and the foundation will soon award another round of funding.



Currently, among the three programs, HFA is the largest single program, serving 3 counties, plus a partial county. There are PAT programs in 22 counties and MIHOW serves 4 full counties, plus portions of several other counties. There are 22 programs serving 29 counties in West Virginia, with over 1,000 families receiving In-Home Family Education from one of these 3 programs.